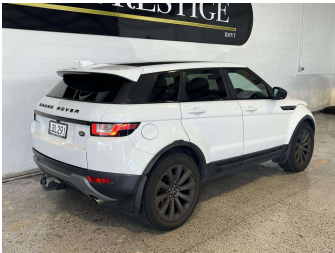


2016 Land Rover Range Rover Evoque SE TECH TD4



Purchase Price

Includes GST, Registration & Licensing

\$34,990

Indicative repayments

\$179.48 per week*

Based on a 48 month term & 20% deposit.
Total repayments (208) = **\$44,329.28**

marac

Gain peace of mind with
Mechanical Breakdown
Insurance. **Ask us how.**



Top features

None Listed

Body Style

RV/SUV

Odometer

44,350 km

Engine

1999 cc, Internal Combustion

Fuel Type

Diesel

Transmission

Automatic

Wheels

-

VIN

SALVA2ANXGH156169

Interior

-

Safety



Based on 2024 UCSR rating
for 11-18 models

Reg No.

LBL291

Ext Colour

White

History

Ex-Overseas, 4 owners

Seats

5 seats

CO2 Emissions

★★★★☆☆

Energy Economy

☆☆☆☆☆☆

Annual fuel cost not available

Energy Consumption unknown.

Stock ID: 30728

SHORE PRESTIGE

Shore Prestige | Phone 0508 888 088 | Email admin@shoreprestige.co.nz
113 Diana Drive, Wairau Valley, Auckland 0627, New Zealand
www.shoreprestige.co.nz



★★★★★
4.84 | 1001 reviews

* Shore Prestige is not a lender nor a financial adviser. Any amounts displayed should not be seen as an offer of finance or taken as financial advice. The interest rate, fees and loan term used in this calculation may not actually represent those available from lenders. Actual interest rates, fees and loan terms will vary per lender and are typically based on an assessment of your credit risk and responsible lending criteria. Any repayment amounts displayed are indicative only and have been calculated using several other indicative inputs. The interest rate used in this calculation is an arbitrary 13.95%, however exact interest rates vary per lender. The term of the loan used in this calculation is 48 months. Exact terms available vary per lender although options typically include 6, 12, 18, 24, 36, 48 and 60 months. This calculation also includes a typical mandatory fee charged by lenders. This is a one-off establishment fee of \$495.00. Typically, this fee can be paid upfront or, as in this calculation, be capitalised over the contract term, ie. included in the loan amount. This fee can vary per lender and other non-mandatory fees and charges may also apply. The total amount of repayments has been calculated by multiplying 208 weekly repayments (based on a 48 month term) by the weekly repayment amount of \$179.48 which equals \$44,329.28. This calculator does not consider any of your own personal circumstances and we strongly suggest you seek budgeting advice prior to committing to any loan contract. Responsible lending criteria and lender terms and conditions will likely apply to any finalised loan contract. Proof of security and/or vehicle insurance may also be required before proceeding.